

An impressionistic painting of a garden path. The scene is bathed in warm, golden light, likely from a low sun. In the foreground, there are dark, silhouetted leaves and branches on the left. A stone balustrade with decorative urn-shaped balusters runs across the middle ground. To the right, a tall, slender lamp post with a glowing spherical globe stands amidst dense, vibrant foliage in shades of orange, red, and purple. The background is a soft, hazy mix of light colors, suggesting a distant building or more trees. The overall style is soft and atmospheric, with visible brushstrokes and a rich color palette.

Guidelines for Submitting to Fine Art Exhibits

By Orit Reuben

Submitting to Exhibits - Introduction

Varieties of ways to find exhibits and submit

Society Web Page - <https://pastelsocietyofcentralflorida.com/events>

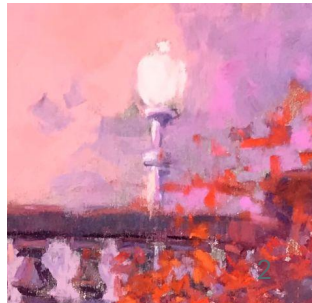
CaFE - Call for Entry - <https://www.callforentry.org/>

Show Submit - <https://www.showssubmit.com/>

Online Juried Shows - <https://www.onlinejuriedshows.com/>

Ask yourself: Why am I entering this exhibit?

What are the benefits? What are the costs?



Prospectus

First step to submitting is to download and read prospectus, and then follow all guidelines and requirements

- Eligible paintings - medium and size
- Entry prices, membership requirements and method of payment
- Calendar of events - Critical dates and deadlines
- Jurying and Judging
- Acceptance
- Awards
- Sales
- Image requirements - naming and sizes
- Framing requirements
- Delivery/shipping and pick up
- Paperwork required along with the painting, labels and signed forms

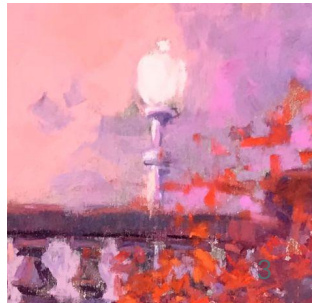
Prepare your submission in plenty of time before the deadline. You may need help from friends or family so don't leave it to the last minute.

Read and review the prospectus carefully, several times to make sure you don't miss any information.

Double-Check your work and make sure you are following all rules and requirements.

Note all important dates and deadlines in your datebook or calendar.

Entries not following the guidelines are automatically rejected.



Painting Eligibility

- **Medium** - percentage of pastel required, example: At least 80% of painting to be pastel, no oil pastels
- **Size limitation** - for physical shows only
- **Originality** - Paintings must be original creations.
Paintings done from life or photos taken by the artist
No works painted workshops or copies of other artist's works.
- **Age** - Work must be created no longer than three years ago
- **No Repeats** - Work must not have been accepted to previous PSCF exhibits.

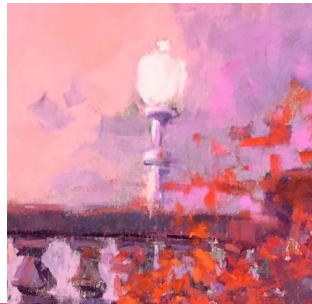



Image Requirements and Preparation

Prepare your images before starting the entry project

- Image in correct format: Jpeg
- Image name standards
- Image size requirements
 1. Resolution
 2. Image size
 3. File size

Name	Size	Kind	Date Last Opened
 O_Reuben_Evening Bougainvillea.jpg	1.3 MB	JPEG image	Today at 3:10 PM

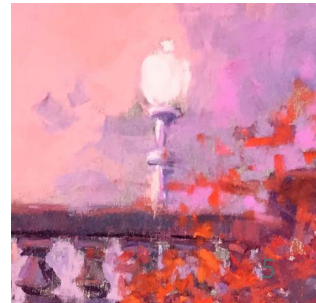


Image Preparation - Image Name

Renaming your image

Example of image name requirement: Last Name_First Initial_PaintingName

(Last Name, Underscore, First Initial, Underscore, Painting Name, don't use any spaces anywhere, including in painting name. Capitalize the first letter in a word to distinguish between the words.)

Example: Reuben_O_EveningBugainvillea.jpeg

- Your initial image name on your phone or camera: IMG_5698
- Download the image from your camera to your computer or email it to yourself from your phone and download on your computer from your email.
- Rename image: On a PC - Right click on the image and select Rename
On a MAC - Hover over image name and left/right/left tap on the pad.
This may take some practice. Ask your friends or family to teach you.
- You may rename your image by opening it in your default image editing program, such as Preview on a MAC, than "save as" and give your image a new name.
- The image extension should be "jpeg" or "jpg" to denote the correct format. (Changing the extension alone will not change the image format.)
- Double-check your file name and make sure it follows the requirements.

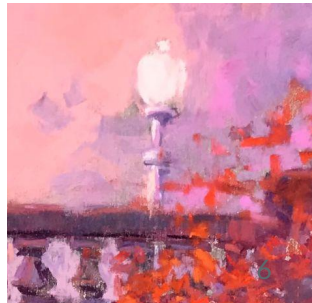


Image Preparation - Specifications

Specification Types

Many platforms will specify digital image specification requirements.

Example: Image must be 300 dpi resolution, 1900 pixels on the longest side, and no larger than 2.0 MB.

Definitions:

Resolution - Denotes the quality of the image. The units of measurements is dpi - dots per inch. The closer the dots are together means there is more detail.

Image Size - The height and width of the image in pixels.

File Size - The amount of memory that the image file takes, measured in megabytes (MB).

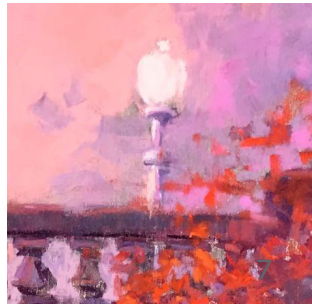


Image Preparation - Specifications, Cont.

Adjusting Image - Resolution

1. Open your image in an image editor program on your computer. Examples are Photo Editor, or Photoshop.
2. Select “Adjust Size” from the menu from tools in Photo Preview - in other programs there will be a similar function. You will need to find where this function lives in each specific program.

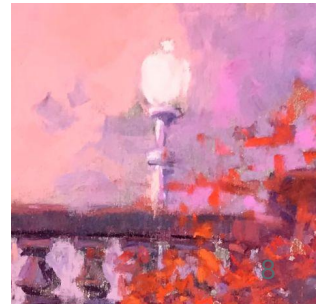
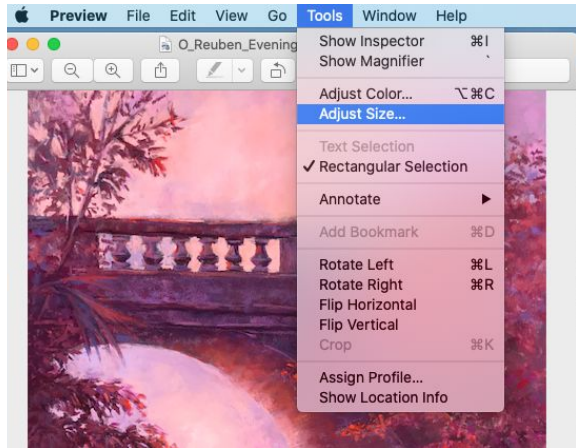


Image Preparation – Specifications, Cont.

Adjusting Resolution, Cont.

3. Change image resolution to 300 dpi, make sure the measurement is pixels/inch.

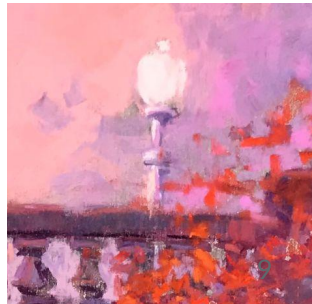
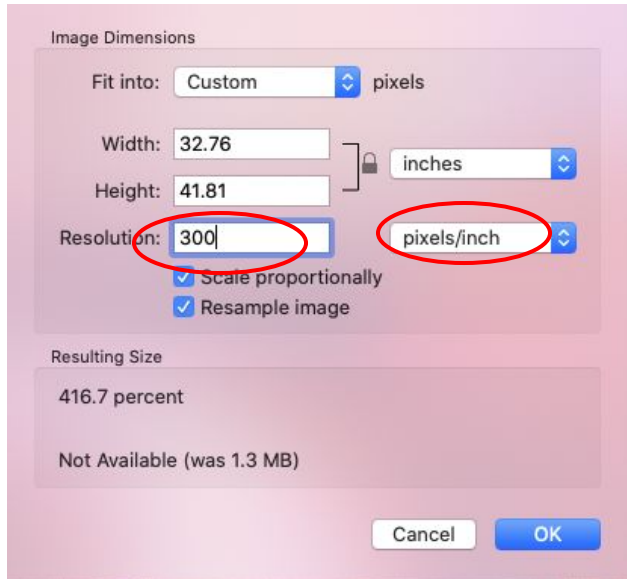
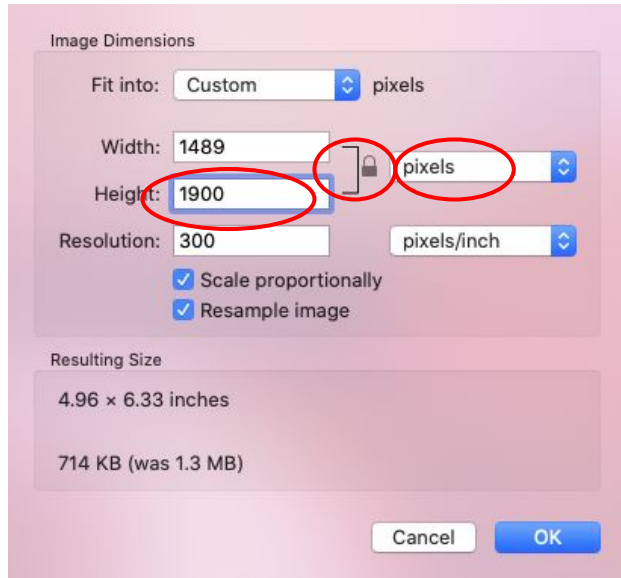


Image Preparation - Specifications, Cont.

Adjusting Image - Image Size



4. Change unit of measurement to pixels.

5. Make sure that the lock is turned on the Width/Height units, so the image proportions remains consistent.

6. Change the measurements of the longest side of the image and the other measurement should Change automatically.

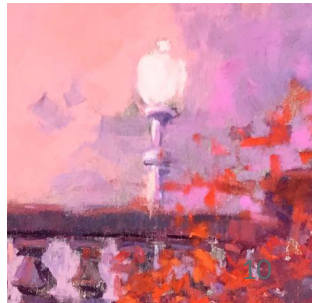


Image Preparation - Specifications, Cont.

Adjusting Digital Image - File Size

7. Confirm the file size meets the size requirements.

Image Dimensions

Fit into: Custom pixels

Width: 1489 pixels

Height: 1900 pixels

Resolution: 300 pixels/inch

Scale proportionally

Resample image

Resulting Size

4.96 × 6.33 inches

714 KB (was 1.3 MB)

Cancel OK

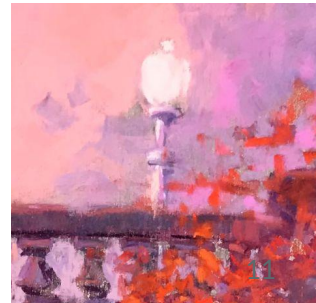
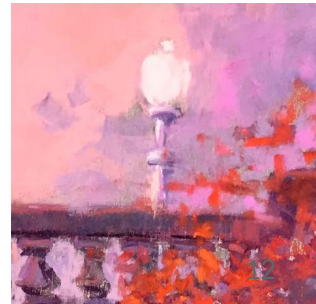
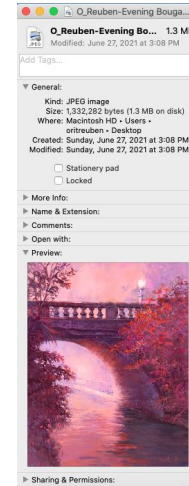
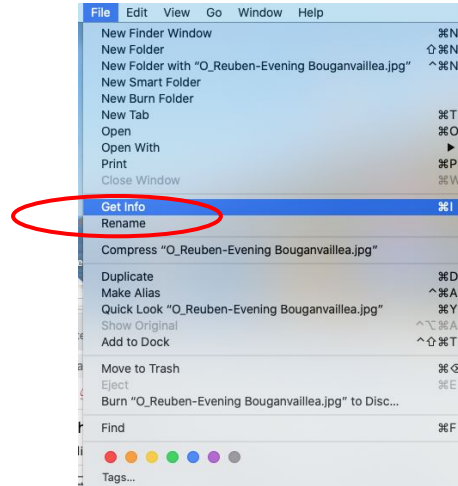


Image Preparation – Specifications, Cont.

Viewing the summary of your parameters

On a MAC,: Select the image file, then in Finder, Rt. Click on “File” than go to Get Info. You will come up with a window with all the image Parameters. (there are other ways of getting this information.)

On a PC: Rt. Click on the image and select “Properties”



Leu Gardens Exhibit Requirements

The following are selected requirements. See prospectus for complete list of rules.

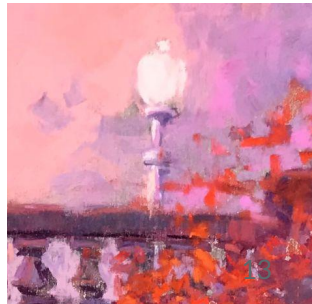
1. Painting subject is botanical, landscape, or Central Florida history
2. All submission information requirements will be spelled out in the prospectus
 - a. Artist name
 - b. Painting title
 - c. Year created
 - d. Painting value \$
 - e. Medium and surface (pastel on paper)
 - f. Painting dimension, H x W (unframed)
 - g. High resolution image - 300 dpi resolution
 - h. File name: Last Name_First Name_PaintingTitle.jpeg
 - i. Painting size maximum: 24" maximum on the longest side
 - j. Digital file size: Between 1 and 3 MB

Any painting or submission not following these directions will be automatically rejected.

Remember this is a juried exhibition with a limited number of paintings to be accepted due to space limitations. In case of non-acceptance a reason for rejection will not be provided to the member.

Important dates: April 6 drop off, Show is April 8 - July 24

Check and double check your work to make sure you meet all the requirements.



Example of Show Submit Platform

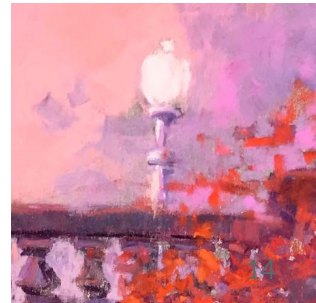
Logging in to Show Submit

Let's log into Show Submit and explore.



The screenshot shows the 'Show Submit' website. At the top left is the logo, which consists of the text 'showsubmit' in a cursive font above a yellow palette with four colored dots (red, yellow, green, blue). To the right of the logo is the text 'Online Entry for Art Exhibitions'. Below this is a navigation menu with links: 'home', 'description', 'demo programs', 'costs', 'photo prep', and 'contact'. The main content area is divided into two columns. The left column has a heading 'ARTISTS' and contains two paragraphs: 'To download a prospectus - Look for the prospectus link for the show you seek in the list to the right. Click to download the prospectus.' and 'To ENTER a show' followed by a numbered list of four steps: 1. Click the 'Log in to Artist Account' button to the right. 2. Even if you do not have an account already, click it anyway, and then create your account by clicking the New Account button on the page that appears. 3. In your account, click the New Show Entry button, find your show in the list of shows currently open, click GO. 4. To edit an entry you already started, click

The right column has a heading 'ARTISTS' and a 'Log in to Artist Account' button. Below the button is a dark red banner with white text: 'Log in to your Artist Account to make or edit your entries. Download the prospectus for any show here.' Underneath are three exhibition listings, each with a logo on the right and a 'prospectus' link at the bottom. The first listing is for the 'National Association of Women Artists at Monmouth Museum Then and Now' with a deadline of 'December 3, 2021'. The second listing is for the 'National Association of Women Artists 2022 National Competition for Direct Carving Hammerschlag Biennial Award' with a deadline of 'December 5, 2021'. The third listing is for the 'Pastel Society of the West Coast Members Only Online Show 2022'.



Example of Show Submit Platform

Logging in to Online Juried Shows

Let's log into Online Juried Shows and explore.


OnlineJuriedShows.com

new show inquiries (for organizations) | current shows (home page) | published shows (see the accepted works) | helpful videos (they really do help!) | image help (resize, rotate & advice) | contact us (and FAQs) | your Artist Profile (check here for jury results)

current shows _____

Current Listings: (Scroll Down to see ALL the shows!)


WATERWORKS



ART MUSEUM

WaterWorks Art Museum
Color Your Dreams

Entry Opening: 9/7/2021
Entry Deadline: 12/14/2021.

Artist Login 

email address:

password:

Artist Sign IN

First Time Entering?

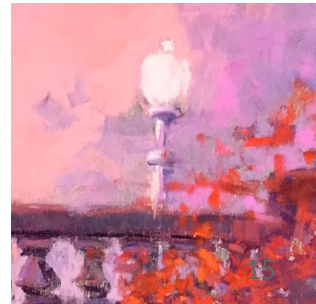
Create New Account

Forgot Password

Juror Login

Admin Login

Login Status Looking for your jury notifications and didn't get one? Log into your Artist Profile -> Review Images and find out how you did!



Thank you for participating

And

Good Luck!

